

VENTRAC

presents...

Snow Blower LX423

For Ventrac 3000 series tractors



Featuring....

- 2-Stage System
- Double spiral serrated auger
- Hinged chute deflector with optional electric actuator
- Standard hydraulic controlled
- 180 degree rotation discharge chute
- Extra heavy-duty shaft and bearings
- Chute guard quick release rubber latches
- Chute liner to reduce snow leakage
- Front crossbar protection bumper
- Ventrac Minute Mount System



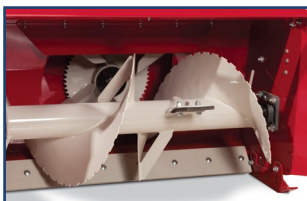
Robust reliability...efficiency...hydraulic directional chute...**heavy duty** shaft & bearings... front protection bumper...SnoStik tool for dislodging snow...adjustable cast iron skid shoes...quick release rubber latches...ease of use in the most rugged snows...it's about **performance**...it's about **productivity**...the Ventrac LX423 Snow Blower



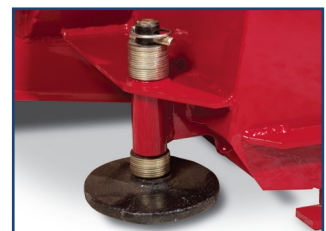
SnoStik™ for dislodging clogged snow



3/8" thick abrasive resistant steel adjustable side skid shoes



Double spiral serrated auger



One piece, shaft mounted adjustable cast iron skid shoe discs

VENTRAC DETAILS & SPECS

LX423	
Stock Code	39.35427
Auger	Double spiral serrated
Auger Diameter	16 inches (40.6 cm)
Snow Capacity	2500 lbs/min
Two Stage	Standard
Paddles	4
Chute Rotation	180 degrees
Throwing Range ¹	Approx 35 – 40 feet (10.6-12.2 meters)
Optional Accessories	
12 Volt Actuator	70.8025
12 Volt Switch and Plug** (required for actuator)	70.3016
Rear Weight Bracket	70.3017
Suitcase Weights (Pk 2 Weights)	70.0102
Dimensions	
Length	44 inches (112 cm)
Width	42 inches (107 cm)
Height	54 inches (137 cm)
Weight	405 lbs (184 kg)

¹ Dependent on wind and snow conditions

* Based on engine speed of 3,200 RPM

All specifications subject to change without notice or obligation

The 42" wide LX423 Snow Blower for the Ventrac 3000 series is built for commercial snow clearing operations of sidewalks, driveways, and other areas. A two stage snow blower, the LX423 features a 16" diameter solid auger for best snow transfer, a large 20" diameter fan, and the ability to move 2500 pounds of snow per minute at distances up to 40 feet. Standard features include adjustable cast iron skid shoe discs at the rear, high carbon hardened steel shoes at the side, and a reversible high carbon hardened steel cutting edge.

The hydraulically activated discharge chute can rotate 180 degrees, all from the convenience of Ventrac's exclusive S.D.L.A. control system. Chute deflection is manually adjustable. An electric chute deflection controller is optional.

