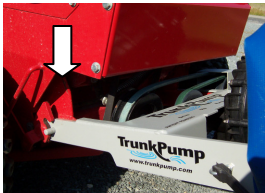


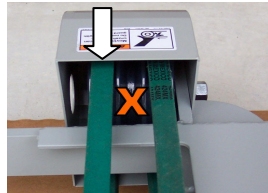


## GENERAL OPERATION

1. Attach your TrunkPump® to a Ventrac® tractor and lock in place.
2. Attach belt on the outer-most pulley and tension with tensioning lever.
3. Raise your TrunkPump® up as high as it will go
4. Unscrew the top fill plug and Fill your TrunkPump® with water BEFORE you use it. Screw the fill plug back on hand tight. Never run your TrunkPump® dry.
5. Keep the TrunkPump® raised during transport to keep as much water in it as possible
6. Once you are in place, attach the suction hose with strainer and place it in water. The more suction hose submerged, the faster the pump will prime. Always use the strainer to keep out debris.
7. Make sure your strainer is in the deepest water and laying flat. Any air will cause your TrunkPump® not to prime properly.
8. Unroll the discharge hose and place it where you want the water to go.
9. Engage the Tractor's PTO as you lower the TrunkPump® to parallel.
10. Increase the throttle and raise the engine's RPM's up to about 3,000.
11. Pinch the discharge hose as shown. This will help your TrunkPump® to prime faster.
12. Hold the hose until you feel enough pressure for the hose to pop out of your hands
13. Decrease the throttle to about 80%. Note. (As the water level gets low, decrease the throttle so your TrunkPump® can keep pumping without getting any air. Going slow near the end allows the water to move towards the strainer)
14. When you are done, raise your TrunkPump® all the way up BEFORE you turn off the PTO. (this keeps water in your TrunkPump® to stay primed if you need to move to another pumping location.)
15. Roll up discharge hose and place back on the frame. Note. (You may need to loosen the top fill plug and let a little air out to be able to roll up your discharge hose)
16. When you are finished using your TrunkPump®, remove the bottom plug and the top fill plug and rinse out with clean water. This cleans out any sediment.



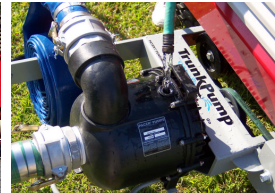
1



2



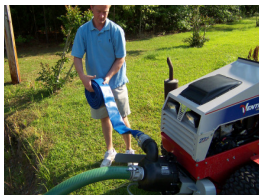
3



4



6



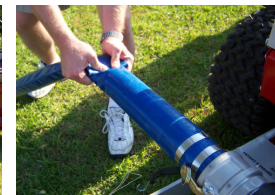
8



9a



9b



11



16



## SAFETY WARNINGS



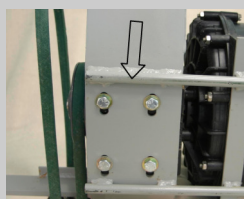
- Operators of the TrunkPump® should read and understand all directions, precautions and warnings in TrunkPump® manual and Pacer® / AMT® Pump manual before operating equipment.
  - Avoid putting hands near belts while tractor is running,
    - failure to do so can result in serious injury.
    - Keep pulley guard in place during operation.
  - Always use a strainer to keep out large debris.
    - **DO NOT PUMP FLAMMABLE LIQUIDS.**

## QUICK TIPS FOR USING YOUR TRUNKPUMP VS MODEL



### BELTS:

Make sure you only use the outer grooves of the 3-groove pulley – the middle groove should have no belt on it.



Be sure your belts are properly tensioned... The adjustment is made by loosening the bolts on the pump base, prying the pump in the adjustment slots, then tightening the bolts down again. Use of a nut locking solution might be helpful if you have an especially rough running machine. Over tensioning will cause undue wear on the bearings, while an overly loose belt will slip. Find the middle ground. The belt should give about 1/2" under medium pressure.



### TRANSPORT and PRIMING:

When your TrunkPump is in the raised position, fill it with water until it drips out the front of the pump. Keep in the raised position for transport.



When the tractor is idling, engage the PTO, lower into position and steadily increase RPMs. When you've reached 3000 rpms, pinch the discharge hose to speed up the priming process... when pressure has built up and you can hold it no longer... it's pumping over 300 gpm.

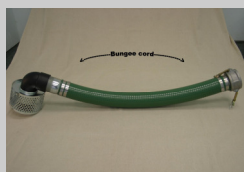


When you've finished pumping... disengage the PTO as you raise your TrunkPump... this will keep as much water as possible in your pump and keep you primed and ready for your next job.



### PUMPING:

When pumping in shallow water with our custom deep draw strainer, idle down when most of the water has been pumped out... this will allow the water to feed the suction line. Restricting the discharge flow will also help in shallow water situations.



### HOSES:

If your short suction trunk is droopy, bungee it when not in use to reinforce it's natural curve... mount it so it curves upward.



### SAFETY:

Be sure you read and understand the owners manual before operation... Always use common sense and operate machinery in safe manner.



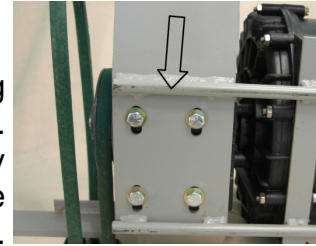
## GENERAL MAINTENANCE

**BELTS:** small belt = 5L-310/ B-28 large belt = 5L-460/B-43 or 4L-420

- **Replace if damaged or severely worn.**
- **Be sure your belts are properly tensioned.**

The adjustment is made by loosening the bolts on the pump base, prying the pump in the adjustment slots, then tightening the bolts down again. Use of a nut locking solution might be helpful if you have an especially rough running machine. Over tensioning will cause undue wear on the bearings, while an overly loose belt will slip. Find the middle ground.

The belt should give about 1/2" under medium pressure. An adjustment may be needed after initial pump use as the belt will expand slightly under operational temperature and will seat itself in the pulley.



### INTERNAL PUMP PARTS:

- **If diminished performance is noticed, replace gaskets, o-rings and/or impeller and volute according to repair kit instructions.**

## HELPFUL TIPS

- With TrunkPump® raised, Fill with water before use.
- Never run pump dry.
- Transport TrunkPump® in raised position to keep as much water in unit as possible.
- Always use a strainer to keep out debris and extend pump life.
- Use the shortest suction hose possible to get the pump to prime as fast as possible.
- For quick priming, use full throttle - then reduce rpms to 80% when flow is established.
- In shallow water, idle down to allow sufficient volume of water to feed suction line.
- Keep all guards in place during operation and avoid contact with moving parts.
- Disconnect TrunkPump® from tractor and PTO when servicing.
- Be sure all hose gaskets are in place and Teflon tape has been used on pump fittings.
- Read and follow instructions in PACER pump manual and TRUNKPUMP® manual.

---

**Disclaimer:** All information contained in this manual is assumed to be accurate at the time of distribution. TrunkPump reserves the right to revise this publication and to make changes in it from time to time without obligation of TrunkPump to notify any person or organization of such revisions or changes.

### WARRANTY INFORMATION

TrunkPump® warrants its products to be free from defects of material and workmanship for a period of one year (12 months) from date of purchase. Wearable items (Hoses, fittings, strainer(s), gaskets and seals) will carry a limited 3 month (90 days) warranty. The company warrants that its products will be free of defects of material and workmanship for normal use and service. This warranty will not apply or be extended to products subjected to misuse, neglect, accident, or improper installation, or to maintenance of products which have been altered or repaired by anyone except TrunkPump® or its authorized representatives. The buyer, or any person receiving such a product during the duration of the warranty, shall contact a TrunkPump® dealer as soon as any defect occurs. Contact TrunkPump® for the name and address of your nearest dealer.



## TROUBLESHOOTING GUIDE:

My TrunkPump® won't pump...

- Are the two drain plugs securely screwed in place?
- Did you make sure all belts were tensioned and hoses were properly attached complete with gaskets?
- Make sure you have the correct belt properly connected to your tractor.
- Did you engage the PTO immediately after dipping the trunk?
- Did you fill the unit with water before you attempted pumping?
- Did you check for any obstructions or clogs in the system?
- If the pump was not level, water may have drained from the unit, fully raise Trunk Pump and add more water.

My Trunk is droopy...

- It may be necessary to hang the trunk in the sun and attach bungee straps to it when not in use to help maintain its curve. It should curve upwards when attached to the unit.

My TrunkPump® doesn't seem as efficient as it used to be...

- If you have had the pump for a while and it has been pumping abrasive materials, it may necessary to replace the gaskets and/or the impeller and volute (for repair kits, *see your local TrunkPump dealer*). Installing these parts annually would be a good maintenance practice.

## FREQUENTLY ASKED QUESTIONS:

What kind of **hoses and fittings** does my TrunkPump® use?

- *Suction hose should be a reinforced 3" PVC hose (usually green) with a female camlock fitting and a threaded hose barb. Discharge hose should be a 3" PVC lay flat 3" hose (usually blue) with female camlock fitting and either an open end or male camlock fitting on the other. NOTE: You'll need to find a hose and rubber supply company for these items, hardware stores and home improvement centers normally do not carry these products.*

Can I use longer hoses if I need to?

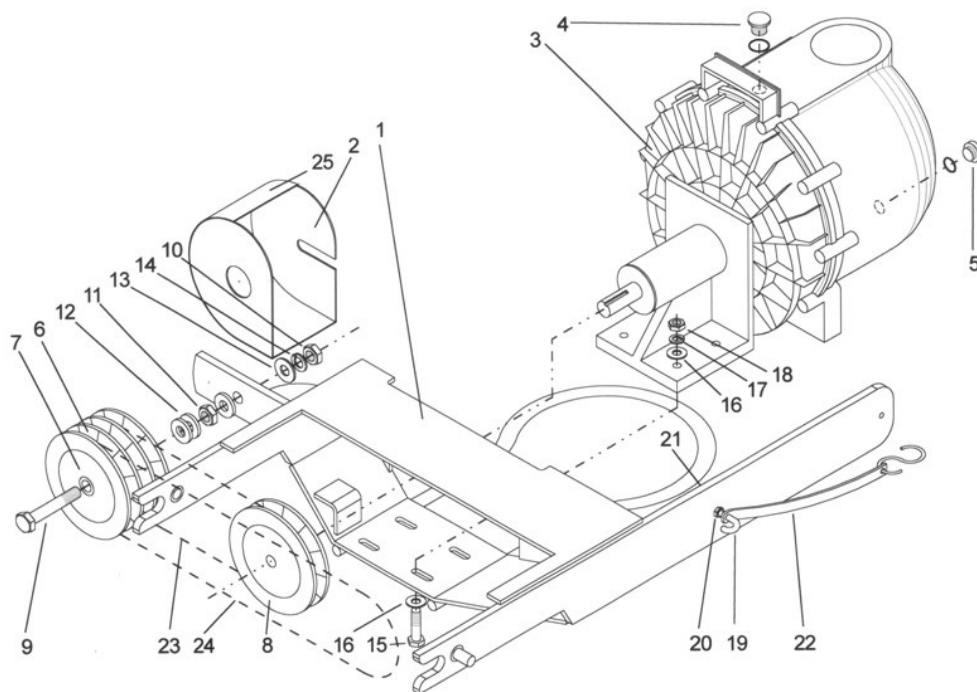
- *Yes, a longer suction hose can be used so long as you don't exceed the vertical pumping capacity of the pump (25 feet of head). NOTE: A longer suction hose will likely need to be detached for transport. And long discharge hoses can run for hundreds of feet.*

Will the TrunkPump® help me with my social life?

- *Helping your social life is beyond the scope of TrunkPump's® capabilities. It is, however, an excellent topic of conversation.*

What size **belts** should I use on my TrunkPump®?

- *Use the following or comparable v-belts. Small Belt: Gates Powerated 6931, Gates Hi-PowerII B28, **Ventracs**, Large Belt: Gates Powerated 6946, Gates Hi-PowerII B43, **Steiners**, Large Belt: Powerated 6842 or 6845, Pro-Belt 4LG-420 or 4LG-450, (depending on model and year of the tractor)*



### TrunkPump Parts List

Part #	description	quantity
1	TrunkPump® powder-coated frame	qty 1
2	TrunkPump® powder-coated pulley protector	qty 1
3	3" Pacer Pedestal (Cast Iron) Pump (Polyester), EPDM lined volute, stainless hardware	qty 1
4	Top Plug w/ o-ring	qty 1
5	Drain Plug w/ o-ring	qty 1
6	3BK50H - triple groove sheave	qty 1
7	1DHI - 1/2" bore idler bushing w/ 2 mounting bolts	qty 1
8	BK52 - 3/4" bore std keyed	qty 1
9	3" x 1/2" - 13 bolt grade 5	qty 1
10	1/2" - 13 nut	qty 1
11	1/2" - 13 jam nut	qty 1
12	1/2" flat washers (thick)	qty 3
13	1/2" flat washers (thin)	qty 1
14	1/2" lockwasher	qty 2
15	1 1/2" x 3/8" - 16 bolt grade 5	qty 4
16	3/8" flat washer	qty 8
17	3/8" lockwasher	qty 4
18	3/8" - 16 nut	qty 4
19	j-hook	qty 1
20	j-hook nut	qty 1
21	j-hook serrated nut	qty 1
22	9" bungee strap with s-hook	qty 1
23	5/8" x 31" Belt	qty 1
24	5/8" x 46" Belt	qty 1
25	"WARNING, moving parts..." sticker	qty 1